

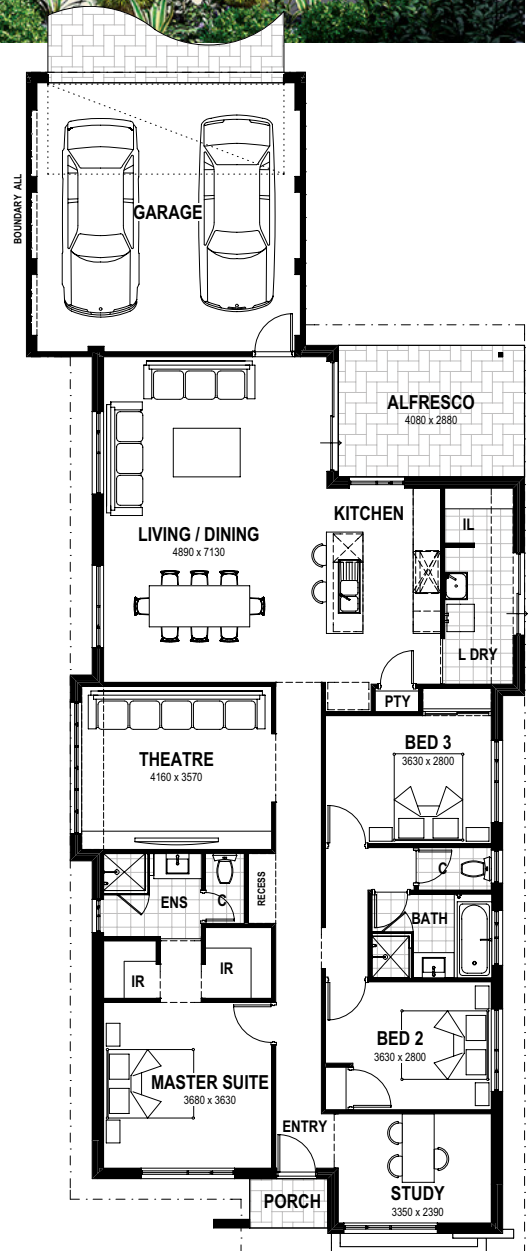


# Voyager

	3
	2
	2



- Contrasting feature render to elevation
- His and Hers walk-in robes to master suite
- Feature bulkhead to theatre
- Double power points throughout
- Large range of quality ceramic wall and floor tiles to ensuite, bathroom, laundry and WC



Notes:.....

.....

.....

.....

.....

.....

Total area: 213.35m<sup>2</sup>  
MOMENTUM RANGE

# Live the life you've always imagined.

Only you truly understand your family's needs, now and in the future. That's why we build homes with modern family living in mind, homes that adapt and evolve with your family. There's a great range of home designs to choose from, all built to the highest quality standards and specification. **Come in for a chat:** we'll match the perfect design to suit your lifestyle and budget.



## WE GIVE YOU MORE:

- ✓ FastTrack - we guarantee your start date and build time\* saving you thousands.
- ✓ Price hold guarantee - we promise to hold the price of your home for 6 months.
- ✓ Building excellence - built by the Summit Homes Group.
- ✓ Your choice of Wespine Blue timber or engineered Steel Frame Roofing.
- ✓ Track and view progress photos anytime via our @Home Customer Portal.
- ✓ Direct mobile phone access to your Building Supervisor.
- ✓ Your home is designed, drawn and costed using only quality local products.
- ✓ Choose from a comprehensive range of high quality inclusions and specifications.
- ✓ Fixed low costs for Bushfire Attack Level (BAL) blocks.

EXPERIENCE THE **SUMMIT**  
**ad✓antage**

Proudly backed by the Summit Homes Group, with nearly 40 years building experience so you get the formidable buying power and experience of one of WA's largest local builders.



### EXPERIENCE

Our experienced team listen and deliver what you want.



### WE'RE LOCAL

Your home is built by local people using quality local products.



### FAST TRACK

Guaranteed start date guaranteed build time\*.



### FINANCIAL SOLUTIONS

Get into your own home sooner with our wide range of finance solutions.



**newgeneration**  
homes

\*Information correct as at 1 October 2016. Plans may be changed or be discontinued without notice. Please speak to your New Homes Consultant for details. Images are for illustrative purposes only. BRN 10689.



POWERED BY THE  
STRENGTH OF

