




# Polaris 12.5

	4
	2
	2



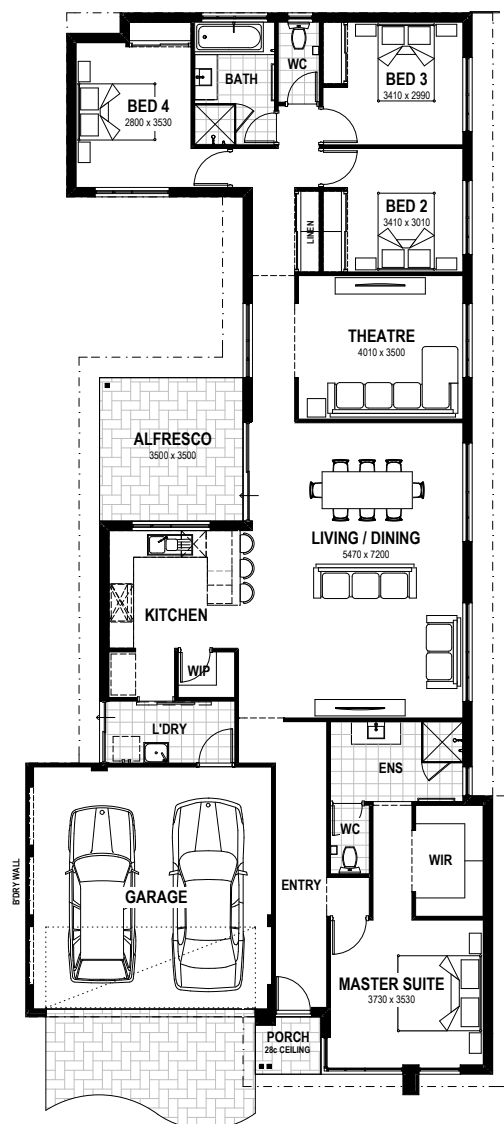
The Polaris 12.5 is a family home that fits a lot of features into a narrow sized block.

At the front is a generously proportioned master suite that boasts a large walk-in robe and ensuite with separate WC.

The cleverly-designed kitchen has a walk in pantry, and has a sliding window overlooking the alfresco. The dining room has direct access to the alfresco through a sliding door.

The children's wing has three large bedrooms, each with sliding robes, grouped around a family-sized bathroom with separate WC.

A theatre room completes the home, creating a cosy place to unwind with your favourite blockbusters.



Notes:.....

.....

.....

.....

.....

.....

Total area: 232.26m<sup>2</sup>  
MOMENTUM RANGE

# Live the life you've always imagined.

Only you truly understand your family's needs, now and in the future. That's why we build homes with modern family living in mind, homes that adapt and evolve with your family. There's a great range of home designs to choose from, all built to the highest quality standards and specification. **Come in for a chat:** we'll match the perfect design to suit your lifestyle and budget.



## WE GIVE YOU MORE:

- ✓ FastTrack - we guarantee your start date and build time\* saving you thousands.
- ✓ Price hold guarantee - we promise to hold the price of your home for 6 months.
- ✓ Building excellence - built by the Summit Homes Group.
- ✓ Your choice of Wespine Blue timber or engineered Steel Frame Roofing.
- ✓ Track and view progress photos anytime via our @Home Customer Portal.
- ✓ Direct mobile phone access to your Building Supervisor.
- ✓ Your home is designed, drawn and costed using only quality local products.
- ✓ Choose from a comprehensive range of high quality inclusions and specifications.
- ✓ Fixed low costs for Bushfire Attack Level (BAL) blocks.

EXPERIENCE THE **SUMMIT**  
**ad✓antage**

Proudly backed by the Summit Homes Group, with over 40 years building experience so you get the formidable buying power and experience of one of WA's largest local builders.



### EXPERIENCE

Our experienced team listen and deliver what you want.



### WE'RE LOCAL

Your home is built by local people using quality local products.



### FAST TRACK

Guaranteed start date guaranteed build time\*.



### FINANCIAL SOLUTIONS

Get into your own home sooner with our wide range of finance solutions.



\*Information correct as at 1 April 2018. Plans may be changed or be discontinued without notice. Please speak to your New Homes Consultant for details. Images are for illustrative purposes only. BC10689.